

Native Human Collagen type I Protein

Cat. No. Collagen type I-02H **Lot. No.** (See product label)

SPECIFICATION

Product Overview	Human collagen type I protein purified from human placenta. The human source was tested and found negative for HBsAg and HIV-1/2 antibodies.
Species	Human
Source	Placenta
Description	Type I collagen is a fibrillar type collagen, and most likely the best investigated collagen. Type I collagen is the most abundant collagen and is the key structural composition of several tissues. It is expressed in almost all connective tissues and the predominant component of the interstitial membrane.
Form	Lyophilized
Molecular Mass	300 kDa
Purity	> 90%
Applications	ELISA
Storage	Store at -20 centigrade only. Storage in frost-free freezers is not recommended. This product should be stored undiluted. Avoid repeated freezing and thawing as this may denature the protein.
Reconstitution	Use 0.05 - 0.5 M acetic acid, pH 2.5 at 4 centigrade.

 Tel: 1-631-559-9269 1-516-512-3133

 Email: info@creative-biomart.com  Fax: 1-631-938-8127

 45-1 Ramsey Road, Shirley, NY 11967, USA

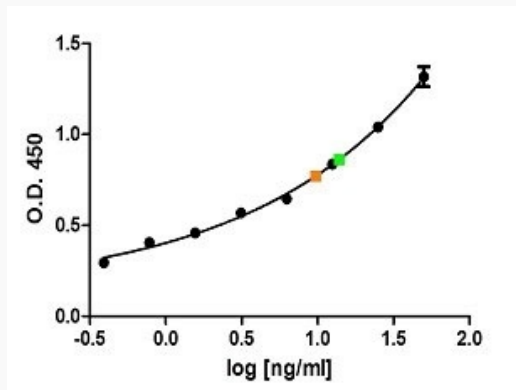
GENE INFORMATION

Official Symbol Collagen type I

Synonyms

COL1A1; COL1A2; Collagen type I; collagen type I alpha 2 chain; OI4; EDSCV; EDSARTH2; collagen alpha-2(I) chain; alpha 2 type I procollagen; alpha 2(I) procollagen; alpha 2(I)-collagen; alpha-2 type I collagen; collagen I, alpha-2 polypeptide; collagen of skin, tendon and bone, alpha-2 chain; collagen, type I, alpha 2; epididymis secretory sperm binding protein; type I procollagen; collagen type I alpha 1 chain; OI1; OI2; OI3; OI4; EDSC; CAFYD; EDSARTH1; collagen alpha-1(I) chain; alpha-1 type I collagen; alpha1(I) procollagen; collagen alpha 1 chain type I; collagen alpha-1(I) chain preproprotein; collagen of skin, tendon and bone, alpha-1 chain; collagen, type I, alpha 1; pro-alpha-1 collagen type 1; type I proalpha 1; type I procollagen alpha 1 chain

ELISA



Sandwich ELISA analysis of human ferritin using Mouse anti Human collagen I/II/III antibody, clone NLI/22 as a capture reagent and biotinylated Mouse anti Human collagen I antibody, as a detection reagent with native human collagen as antigen. Detection is by HRP conjugated streptavidin and substrate. Microtitre plate is read at O.D. 450 nm on the Bio-Rad iMark Microplate Absorbance Reader. Normal

Tel: 1-631-559-9269 1-516-512-3133

Email: info@creative-biomart.com Fax: 1-631-938-8127

45-1 Ramsey Road, Shirley, NY 11967, USA



serum (green) and plasma (orange) samples are included diluted 1:4.

 Tel: 1-631-559-9269 1-516-512-3133

 Email: info@creative-biomart.com  Fax: 1-631-938-8127

 45-1 Ramsey Road, Shirley, NY 11967, USA